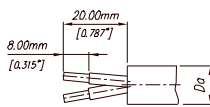


Kabelstecker Cable Connector

Speakon® System

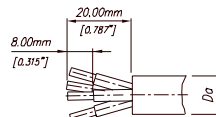
Kabelvorbereitung Cable Preparation

NL2FC



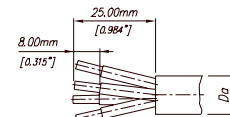
Da= 4.00 [0.157"] - 10.00 [0.394"]

NL4FC



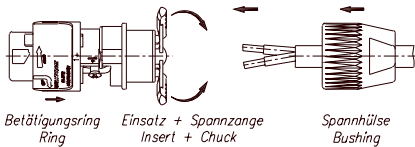
Da= 5.00 [0.197"] - 11.00 [0.433"]
... Spannzange weiss; ... white chuck
Da= 9.50 [0.374"] - 15.00 [0.591"]
... Spannzange schwarz

NL8FC

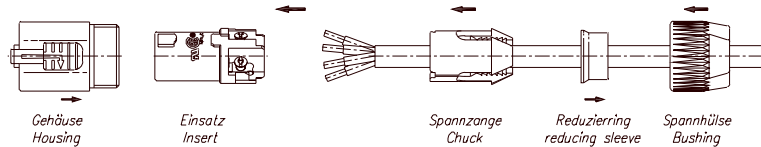


Da= 8.00 [0.315"] - 15.00 [0.591"]
... mit Reduzierring; ... with reducing sleeve
Da= 15.00 [0.591"] - 20.00 [0.787"]
... ohne Reduzierring; ... without reducing sleeve

Montage Assembling

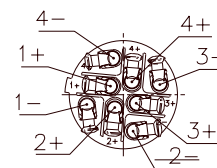
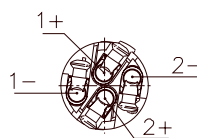
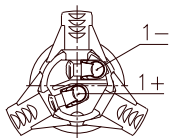


Betätigungsring Ring
Einsatz + Spannzange Insert + Chuck
Spannhülse Bushing



Gehäuse Housing
Einsatz Insert
Spannzange Chuck
Reduzierring reducing sleeve (only for NL8FC)
Spannhülse Bushing

Verdrahtung Wiring

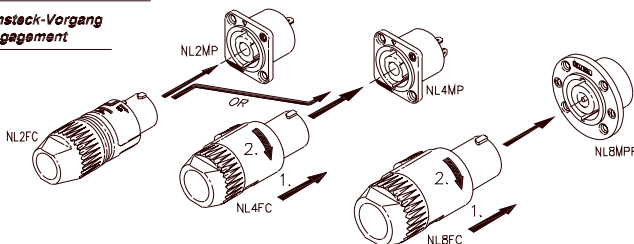


- Spannhülse auf Kabel schieben.
Put bushing onto the cable.
- Kabel lt. Anweisung vorbereiten.
Prepare cable as shown above.
- Drähte in die Klemmlöcher am Einsatz einführen und mit Schraube und Klemmblech mittels Inbus-Gewindestift SW 1.5mm oder Schraubenzieher befestigen.
Insert the wires into the terminals and fasten the clamping device by means of Allankey 1/16" or flat screw driver.
- Betätigungsring in Richtung Spannzange schieben.
Snap on locking ring into the chuck direction as shown above.
- Spannhülse mittels Gabelschlüssel SW 17mm fest anschrauben.
Fasten bushing by means of a fork wrench 11/16".

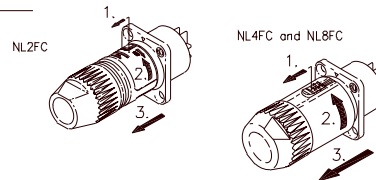
- Spannhülse u. Spannzange auf Kabel schieben (Spannzange kann auch nachträglich angebracht werden).
Put bushing and chuck onto the cable.
- Kabel lt. Anweisung vorbereiten.
Prepare cable as shown above.
- Drähte in die Klemmlöcher am Einsatz einführen und mit Schraube und Klemmblech mittels Inbus-Gewindestift SW 1.5mm oder Schraubenzieher befestigen.
Insert the wires into the terminals and fasten the clamping device by means of Allankey 1/16" or flat screw driver.
- Einsatz und Spannzange in das Gehäuse schieben (Führungsrippen und Führungsnut beachten!).
Push insert and chuck into housing (pay attention to the guiding keyway!).
- Spannhülse mittels Gabelschlüssel SW 19mm fest anschrauben.
Fasten bushing by means of a fork wrench 3/4".

Bedienung Handling

Einsteck-Vorgang Engagement



Aussteck-Vorgang Separation

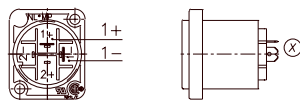


Not for use as mains (A.C.) connectors!

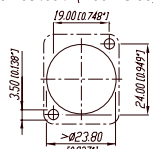
Gehäusestecker Receptacle

Verdrahtung Wiring

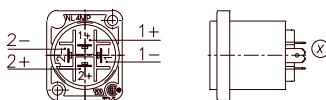
NL2MP



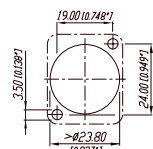
Frontplattenausschnitt (Rückseite)
Panel Cutout (Rear Side)



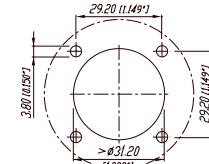
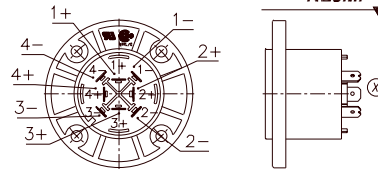
NL4MP



⊗ für Flachsteckhülsen 4.8 mm x 0.6 mm
for flat quick-connect receptacles 0.187" x 0.020"



NL8MP



NEUTRIK®

CONNECTING THE WORLD